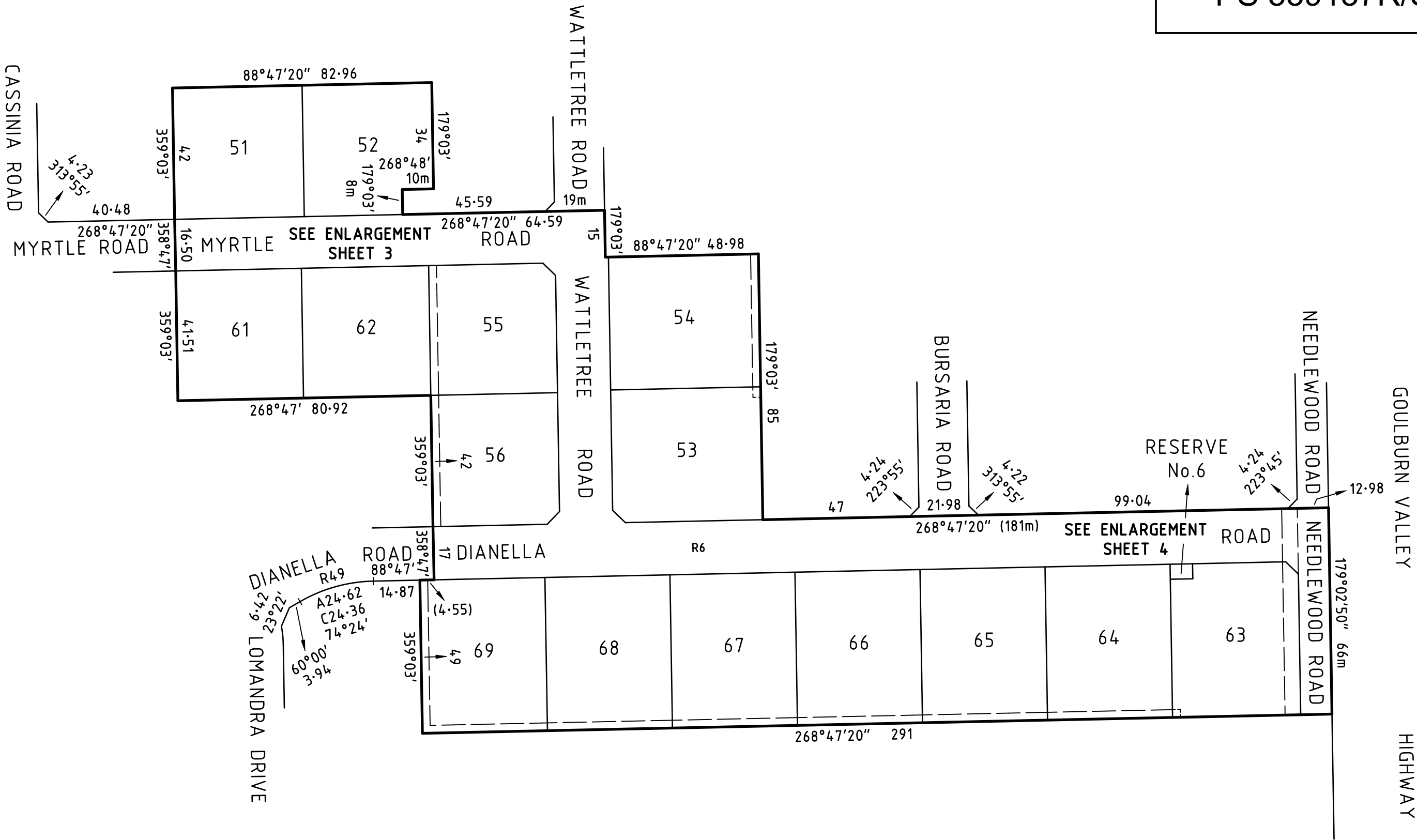


PLAN OF SUBDIVISION				EDITION 1		PS 539137R/S4	
LOCATION OF LAND PARISH: KIALLA CROWN ALLOTMENTS 61B (PART) & 61C (PART) 							



SURVEYOR'S REF: 18131/01

Chris Smith

& ASSOCIATES

LEVEL 1 / 135 FRYERS STREET

SHEPPARTON VIC. 3630

PH: (03) 5820 7700

FAX: (03) 5822 4878

www.csmith.com.au

PTY LTD

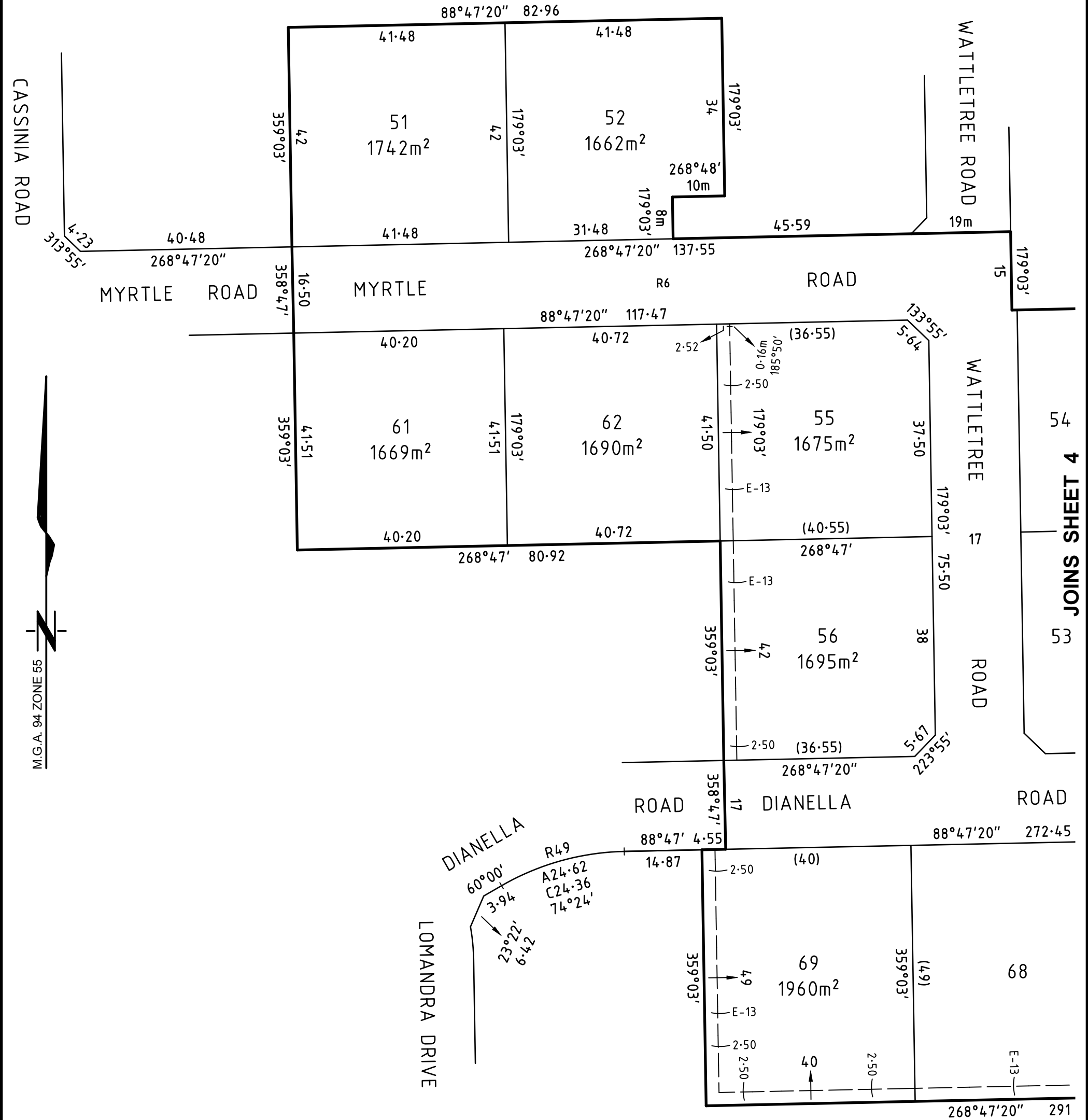
• LAND SURVEYORS

• URBAN & REGIONAL PLANNERS

• CIVIL ENGINEERS

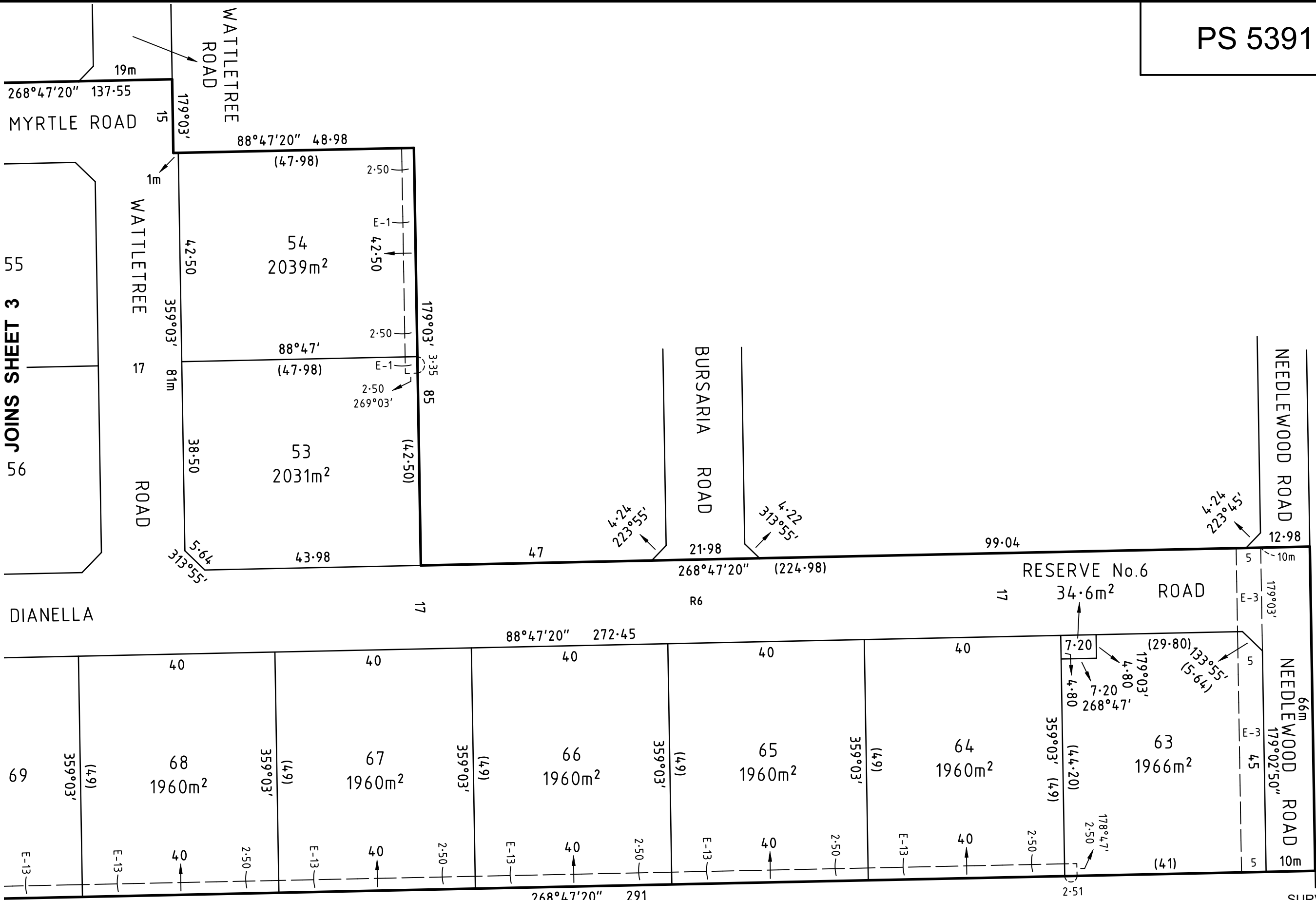
• PROJECT MANAGERS

SCALE 1:1250	<div><div>12.56.25012.52537.550</div><div>LENGTHS ARE IN METRES</div></div>	ORIGINAL SHEET SIZE: A3	SHEET 2
BRADLEY SANDERS / VERSION 2			



JOINS SHEET 4
54
53

SURVEYOR'S REF: 18131/01



SURVEYOR'S REF: 18131/01

Chris Smith

& ASSOCIATES

LEVEL 1 / 135 FRYERS STREET

SHEPPARTON VIC. 3630

PH: (03) 5820 7700

FAX: (03) 5822 4878

www.csmith.com.au

PTY LTD

• LAND SURVEYORS

• CIVIL ENGINEERS

• URBAN & REGIONAL PLANNERS

• PROJECT MANAGERS

SCALE 1:750	<div><div>7.53.750</div><div>07.51522.530</div><div>LENGTHS ARE IN METRES</div></div>	ORIGINAL SHEET SIZE: A3	SHEET 4
BRADLEY SANDERS / VERSION 2			