



**Westonbury**  
Residences

[westonburyresidences.com.au](http://westonburyresidences.com.au)

2 Westonbury drive  
Truganina 3029



# A wonderful opportunity to secure the house of your dreams now!

Located just 25 kilometres from Melbourne CBD, Westonbury Residences is offering you the opportunity to connect to your surroundings in a truly serene landscape in Truganina.

We are offering you the opportunity to invest in your and your family's future.

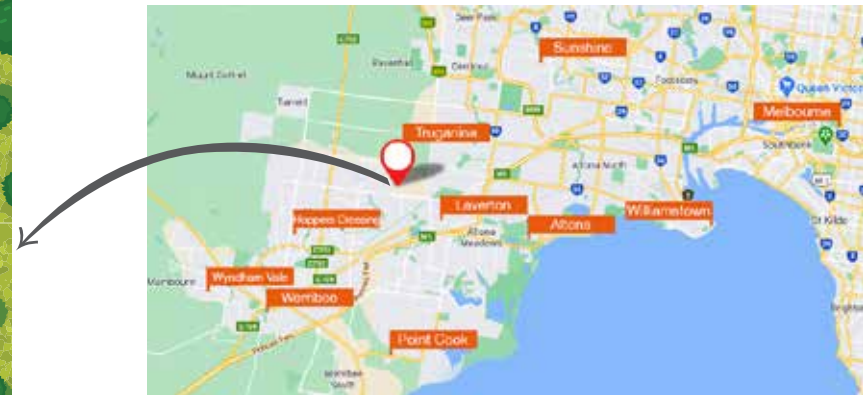
With several educational institutions, hospitals, public transport and shopping and recreational spots located in the vicinity, you will surely find the house of your dreams in Westonbury Residences!



**Westonbury**  
Residences



Elevate  
Your  
Living



## Overview

Westonbury Westonbury Residences is offering an exciting new opportunity to join a vibrant and flourishing residential community in the heart of Truganina.

The background of the slide is a composite image. On the left, a woman with long blonde hair, wearing a white t-shirt, is smiling and looking down at a beagle dog. They are in a field of tall, golden grass under warm, golden-hour lighting. On the right, there is a close-up of bright yellow, fluffy flowers, possibly mimulus, against a clear blue sky. A dark blue diagonal shape cuts across the bottom left, serving as a background for the text.

## A Promising Future

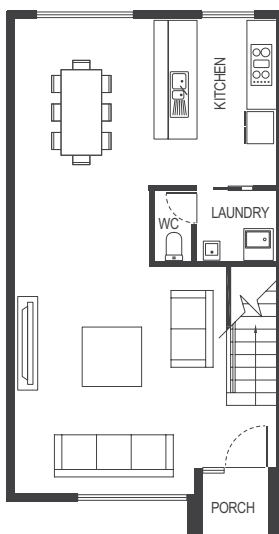
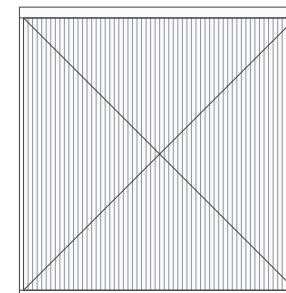
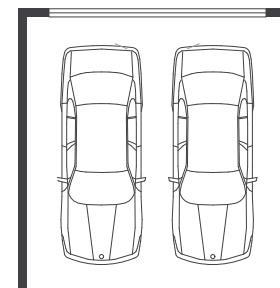
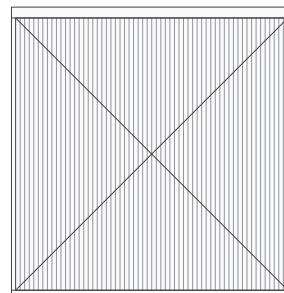
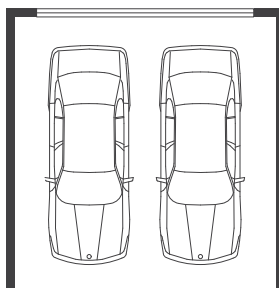
With wide array of cafes, dining venues, retailers and other spots located right at your doorstep, Westonbury Residences is offering a chance to live in a peaceful, tight-knit environment surrounded by your loved ones.

TYPE 1, 1B	
BEDROOM	3
BATHROOM	2.5
GARAGE	2 CARS
PORCH AREA	2 m <sup>2</sup>
GARAGE AREA	39 m <sup>2</sup>
GROUND FLOOR AREA	67 m <sup>2</sup>
FIRST FLOOR AREA	67 m <sup>2</sup>
<b>TOTAL FLOOR AREA</b>	<b>175 m<sup>2</sup></b>

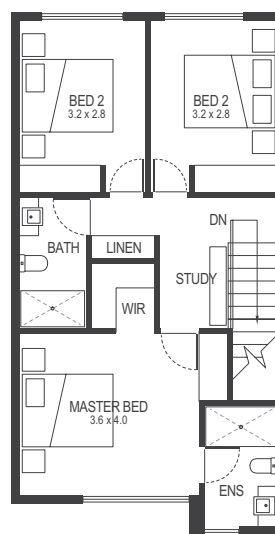
UNIT TYPE	UNIT N°
TYPE 1 - OPTION1	5, 7, 8, 11,12
TYPE 1 - OPTION2	3, 9, 10
TYPE 1B	2

#### NOTE

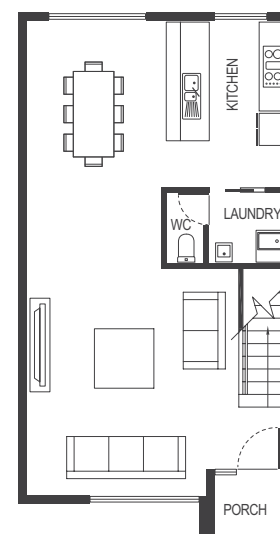
TYPE 1B (UNIT2) To have similar Design to TYPE 1 (Option2) with the exception of having side by side party walls.



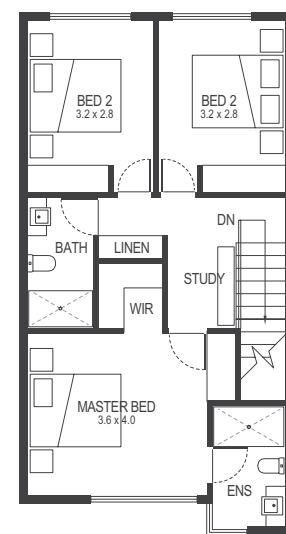
**TYPE 1**  
**Ground Floor Plan**



**TYPE 1**  
**First Floor Plan**

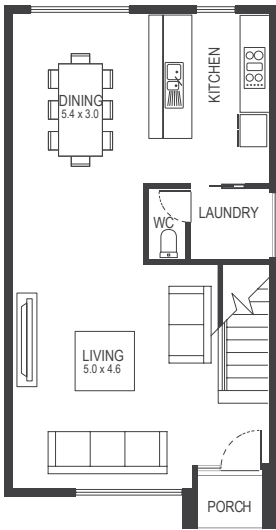
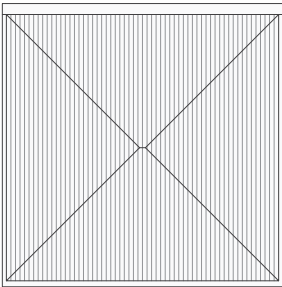
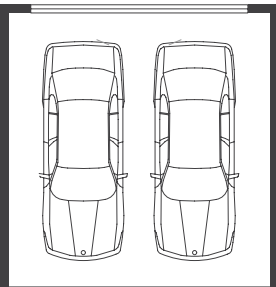


**TYPE 1B**  
**Ground Floor Plan**

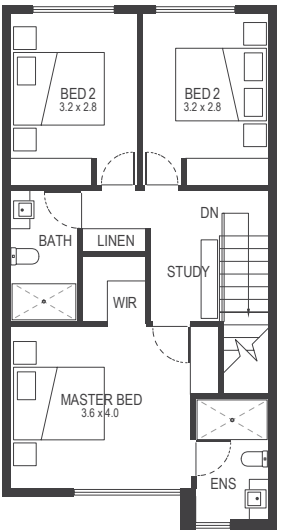


**TYPE 1B**  
**First Floor Plan**

TYPE 2	
BEDROOM	3
BATHROOM	2.5
GARAGE	2 CARS
PORCH AREA	2 m <sup>2</sup>
GARAGE AREA	39 m <sup>2</sup>
GROUND FLOOR AREA	67 m <sup>2</sup>
FIRST FLOOR AREA	67 m <sup>2</sup>
TOTAL FLOOR AREA	175 m <sup>2</sup>

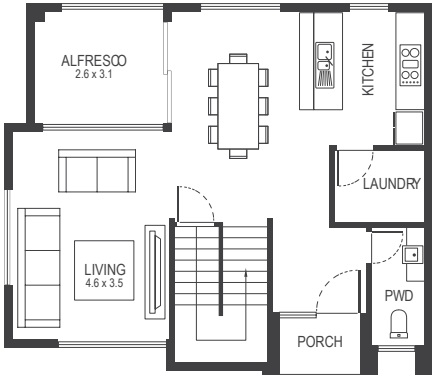
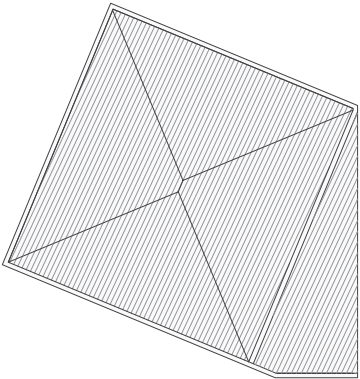
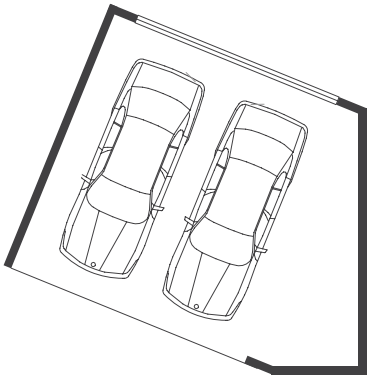


TYPE 2  
Ground Floor Plan

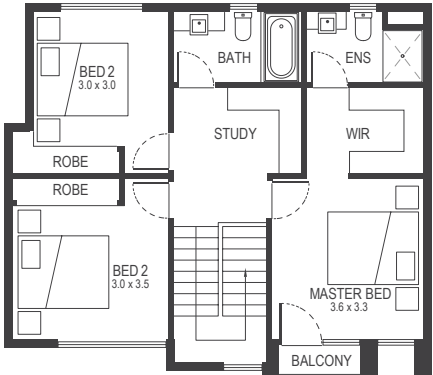


TYPE 2  
First Floor Plan

TYPE 3	
BEDROOM	3
BATHROOM	2.5
GARAGE	2 CARS
PORCH AREA	2 m <sup>2</sup>
GARAGE AREA	44 m <sup>2</sup>
GROUND FLOOR AREA	64 m <sup>2</sup>
ALFRESCO	8 m <sup>2</sup>
FIRST FLOOR AREA	106 m <sup>2</sup>
BALCONY	1 m <sup>2</sup>
TOTAL FLOOR AREA	225 m <sup>2</sup>

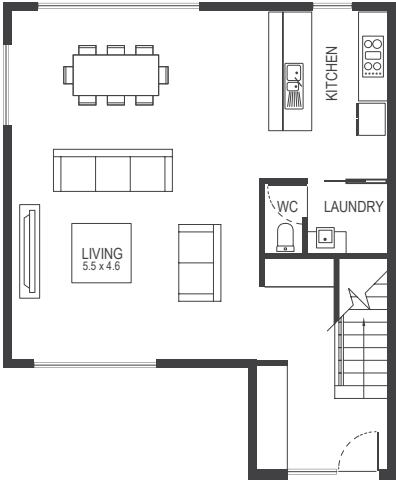
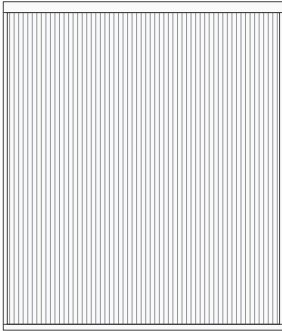
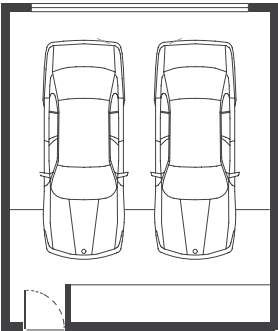


TYPE 3  
Ground Floor Plan

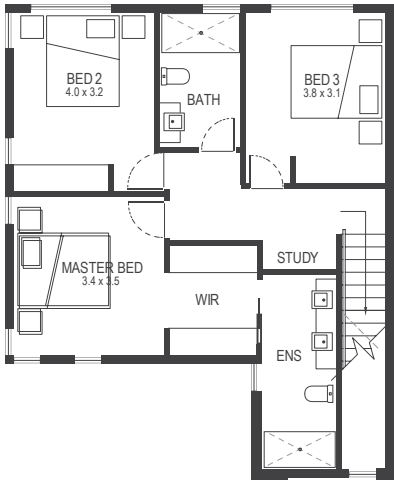


TYPE 3  
First Floor Plan

TYPE 4	
BEDROOM	3
BATHROOM	2.5
GARAGE	2 CARS
GARAGE AREA	45 m <sup>2</sup>
GROUND FLOOR AREA	78 m <sup>2</sup>
FIRST FLOOR AREA	78 m <sup>2</sup>
TOTAL FLOOR AREA	199 m <sup>2</sup>



TYPE 4  
Ground Floor Plan



TYPE 4  
First Floor Plan



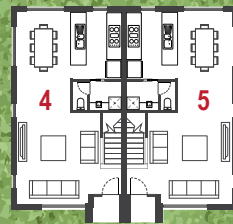
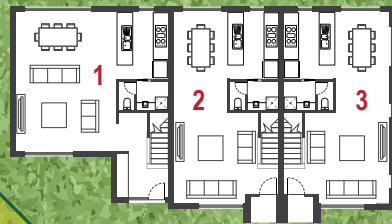
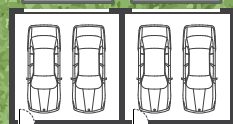
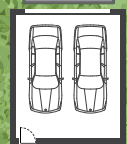
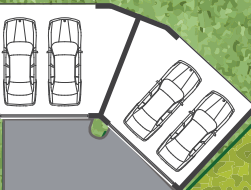
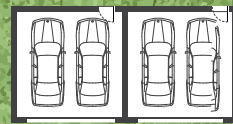
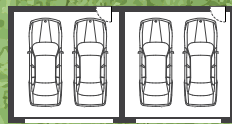
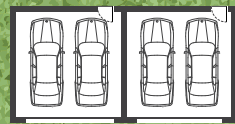
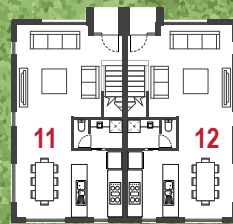
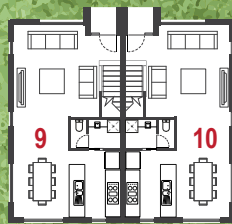
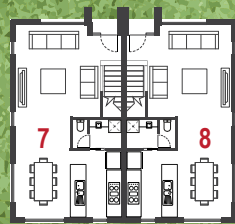
Living  
In Style



WESTONBURY DRIVE

MARQUANDS ROAD

SEAFORD CCT





BROOKLYN

Coles Traneit

Aldi

Garrang Wilam  
Primary School

LAVERTON  
NORTH

Tarneit Rise  
Primary School

Clares Catholic  
Primary School

ALTONA NORTH

Baden Powell  
P-9 College

St Francis Assisi  
Catholic Primary School

Coles Wyndham  
Village

2 Westonbury Drive

Davis Creek  
Primary School

Lawrie Emmins  
Reserv

Baden Powell  
College

Westbourne  
Grammar School

LAVERTON

ALTONA

IGA

Coles  
Tarneit West

Woolworths

Truaganina South  
Primary School

WILLIAMS  
LANDING

Woolworths Williams  
Landing

ALTONA  
MEADOWS

ALTONA BEACH

Cambridge  
Primary School

Hoppers Crossing  
Secondary College

Bellbridge  
Primary School

SEABROOK

Mossfiel  
Primary School

Point Cook Senior  
Secondary College

Suzanne Cory  
High School

WERRIBEE

Werribee  
Secondary College

WERRIBEE OPEN  
RANGE ZOOE

POINT COOK

POINT COOKE  
MARINE  
SANCTUARY

Nearby  
Amenities



# Westonbury

## Residences

2 Westonbury drive  
Truganina 3029

**Anand WOODHOO**

☎ **0412 976 270**

✉ **woody@vhls.net.au**

**Kevin WOODHOO**

☎ **0490 030 197**

✉ **kevin@vhls.net.au**

**Tyson ST JACQUES**

☎ **0410 692 304**

✉ **tyson@vhls.net.au**

**Lakshan AKASHA**

☎ **0405 172 875**

✉ **lakshan@vhls.net.au**

**Michael XU**

☎ **0420 840 416**

✉ **michael@vhls.net.au**



📍 30 Glenbrook Drive,  
Wyndham Vale, VIC 3024



[vhls.com.au](http://vhls.com.au)

