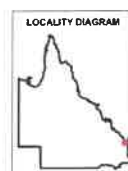




## Vegetation Management Pre-clear Regional Ecosystem Map

- Highway
- Connector
- Street/Local Road
- Other land parcel boundaries
- Pre-clearing area containing Endangered RE
- Pre-clearing area containing Of Concern RE
- Pre-clearing area that is a Least Concern RE
- Water
- Selected Lot and Plan



N

0 8.35 16.7 25.06 33.4 41.75 m

This product is displayed in:  
GDA2020

### Disclaimer:

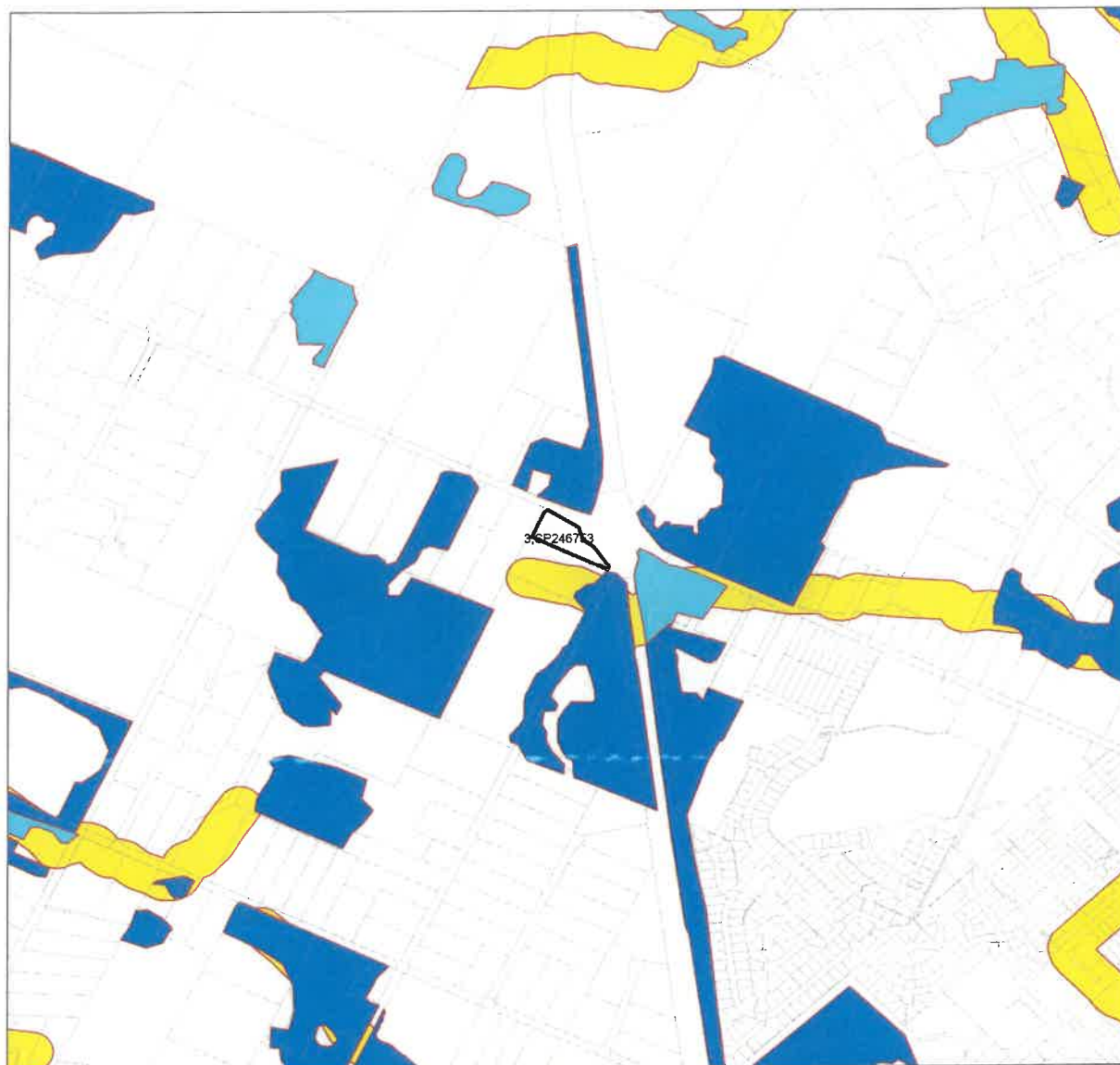
While every care is taken to ensure the accuracy of this product, the Department of Natural Resources and Mines, Manufacturing, and Regional and Rural Development makes no representations or warranties about its accuracy, reliability, completeness, or suitability for any particular purpose and disclaims all responsibility and all liability (including without limitation, liability or negligence) for all expenses, losses and damages (including indirect or consequential damage) and costs which you might incur as a result of the product being inaccurate or incomplete in any way and for any reason.

Pre-clearing regional ecosystem line-work reproduced at a scale greater than 1:100,000, except in designated areas, should be used as a guide only.

Digital data for the Pre-clearing regional ecosystem map is available from the Queensland Spatial Portal at <http://www.spatial.information.qld.gov.au/>

Land parcel boundaries shown are provided as a locational aid only.





## Regulated Vegetation Management Map



- Category A area (Vegetation offsets/compliance notices/VDecs)
- Category B area (Remnant vegetation)
- Category C area (High-value regrowth vegetation)
- Category R area (Reef regrowth watercourse vegetation)
- Category X area (Exempt clearing work on Freehold, Indigenous and Leasehold land)
- Water
- Other land parcel boundaries
- Selected Lot and Plan

### Disclaimer:

While every care is taken to ensure the accuracy of this product, the Department of Natural Resources and Mines, Manufacturing, and Regional and Rural Development makes no representations or warranties about its accuracy, reliability, completeness or suitability for any particular purpose and disclaims all responsibility and all liability (including without limitation, liability in negligence) for all expenses, losses, damages (including indirect or consequential damage) and costs which you might incur as a result of the product being inaccurate or incomplete in any way and for any reason.

Additional information required for the assessment of vegetation values is provided in the accompanying "Vegetation Management Supporting map". For further information go to the web site: [www.nrmrdd.qld.gov.au](http://www.nrmrdd.qld.gov.au) or contact the Department of Natural Resources and Mines, Manufacturing, and Regional and Rural Development.

Digital data for the regulated vegetation management map is available from the Queensland Spatial Portal at <http://www.spatial.information.qld.gov.au/>

Land parcel boundaries are provided as locational aid only.

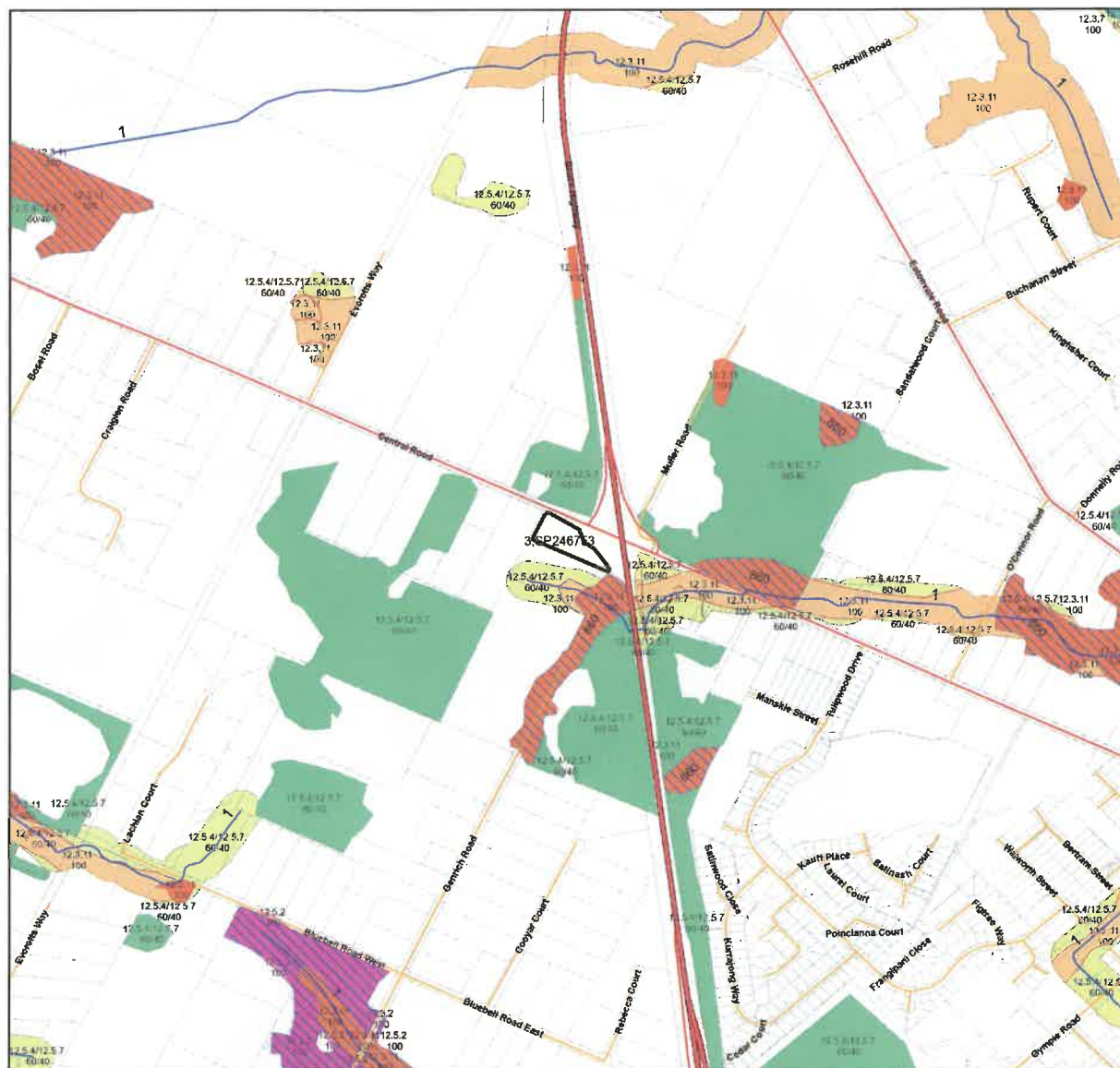
This map is updated on a monthly basis to ensure new PMAVs are included as they are approved.



This product is displayed in:  
GDA2020



© The State of Queensland (Department of Natural Resources and Mines, Manufacturing, and Regional and Rural Development), 2025



## Vegetation Management Supporting Map

- Category A or B area containing endangered regional ecosystems
- Category A or B area containing of concern regional ecosystems
- Category A or B area that is a least concern regional ecosystem
- Category C or R area containing endangered regional ecosystems
- Category C or R area containing of concern regional ecosystems
- Category C or R area that is a least concern regional ecosystem
- Category X area
- Water
- Wetland on the vegetation management wetlands map
- Essential habitat on the essential habitat map
- Essential habitat species record
- Watercourses and drainage features on the vegetation management watercourse and drainage features map (Stream order shown as black number against stream where available)
- Highway
- Connector
- Street/Local Road
- National Parks, State Forest and other reserves
- Other land parcel boundaries
- Selected Lot and Plan



0 110 220 330 440 550 m

This product is displayed in:  
GDA2020

Labels for Essential Habitat are centred on the area of enquiry.

Regional ecosystem linework has been compiled at a scale of 1:100 000, except in designated areas where a compilation scale of 1:50 000 is available. Linework should be used as a guide only. The positional accuracy of RE data mapped at a scale of 1:100 000 is +/- 100 metres.

### Disclaimer:

While every care is taken to ensure the accuracy of this product, the Department of Natural Resources and Mines, Manufacturing, and Regional and Rural Development makes no representations or warranties about its accuracy, reliability, completeness or suitability for any particular purpose and disclaims all responsibility and all liability (including without limitation, liability in negligence) for all expenses, losses, damages (including indirect or consequential damage) and costs which you might incur as a result of the product being inaccurate or incomplete in any way and for any reason.

Additional information may be required for the purposes of land clearing or assessment of a regional ecosystem map or PMAV applications. For further information go to the web site: [www.nrm.qld.gov.au](http://www.nrm.qld.gov.au) or contact the Department of Natural Resources and Mines, Manufacturing, and Regional and Rural Development.

Digital data for the vegetation management watercourse and drainage feature map, vegetation management wetlands map, essential habitat map and the vegetation management remnant and regional ecosystem map are available from the Queensland Spatial Portal at <http://www.spatial.information.qld.gov.au/>

Land parcel boundaries are provided as locational aid only.



## Vegetation Management Act 1999 - Extract from the essential habitat database

Essential habitat is required for assessment under the:

- State Development Assessment Provisions - State Code 16: Native vegetation clearing which sets out the matters of interest to the state for development assessment under the *Planning Act 2016*; and
- Accepted development vegetation clearing codes made under the *Vegetation Management Act 1999*

Essential habitat for one or more of the following species is found on and within 1.1 km of the identified subject lot/s on the accompanying essential habitat map.

This report identifies essential habitat in Category A, B and Category C areas.

The numeric labels on the essential habitat map can be cross referenced with the database below to determine which essential habitat factors might exist for a particular species.

Essential habitat is compiled from a combination of species habitat models and buffered species records.

The Department of Natural Resources and Mines, Manufacturing, and Regional and Rural Development website <http://www.nrmrdd.qld.gov.au> has more information on how the layer is applied under the State Development Assessment Provisions - State Code 16: Native vegetation clearing and the *Vegetation Management Act 1999*.

Regional ecosystem is a mandatory essential habitat factor, unless otherwise stated.

Essential habitat, for protected wildlife, means a category A area, a category B area or category C area shown on the regulated vegetation management map-

1. that has at least 3 essential habitat factors for the protected wildlife that must include any essential habitat factors that are stated as mandatory for the protected wildlife in the essential habitat database; or
2. in which the protected wildlife, at any stage of its life cycle, is located.

Protected wildlife includes critically endangered, endangered, vulnerable or near-threatened native wildlife prescribed under the *Nature Conservation Act 1992*.

### Essential habitat in Category A and/or Category B and/or Category C

No records

